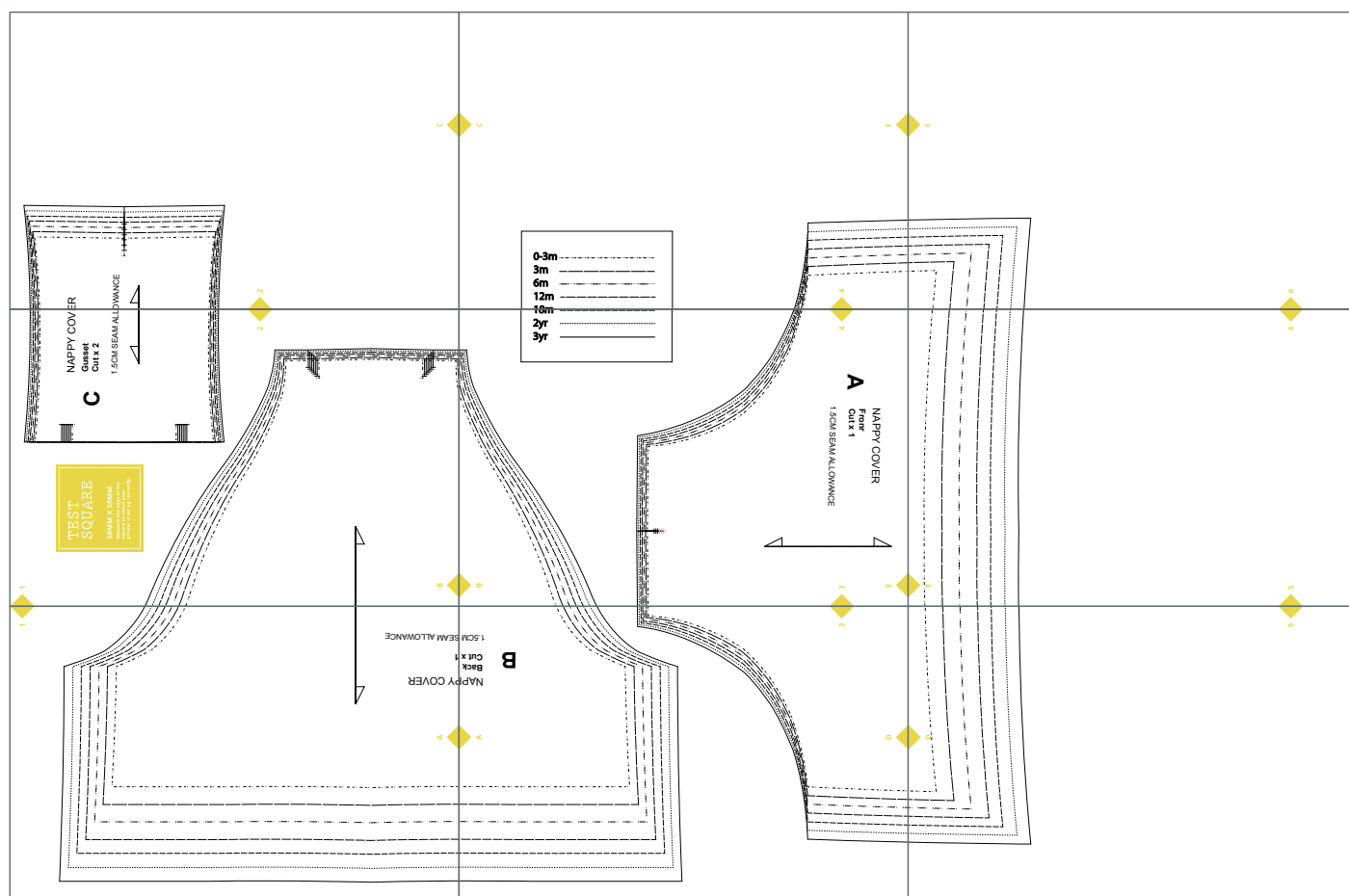


NAPPY COVER



HOW TO USE YOUR PDF

PRINTING:

- Firstly print the pattern piece that has the test square printed on it. Measure the test square to check it measures accurately.
- Printers vary, check the printing settings, look for "print to actual size".
- The printer should also be set on single sided printing mode.
- Once you are happy that the set up is right print the pattern.
- Alternatively there are print companies that offer to print pdf patterns for a reasonable cost.

ASSEMBLING YOUR PDF:

- The pieces have small yellow numbers and letter marked for easy matching
- Trim or fold the border on one adjoining piece of pattern so that you can neatly match them together.
- Tape or glue the pieces together.

USING THE PATTERN:

- Once you have the pattern assembled you can choose to trace off your chosen size and keep the master pattern or cut it out.

HAVE FUN SEWING. DON'T FORGET TO SHARE YOUR MAKES ON SOCIAL MEDIA!

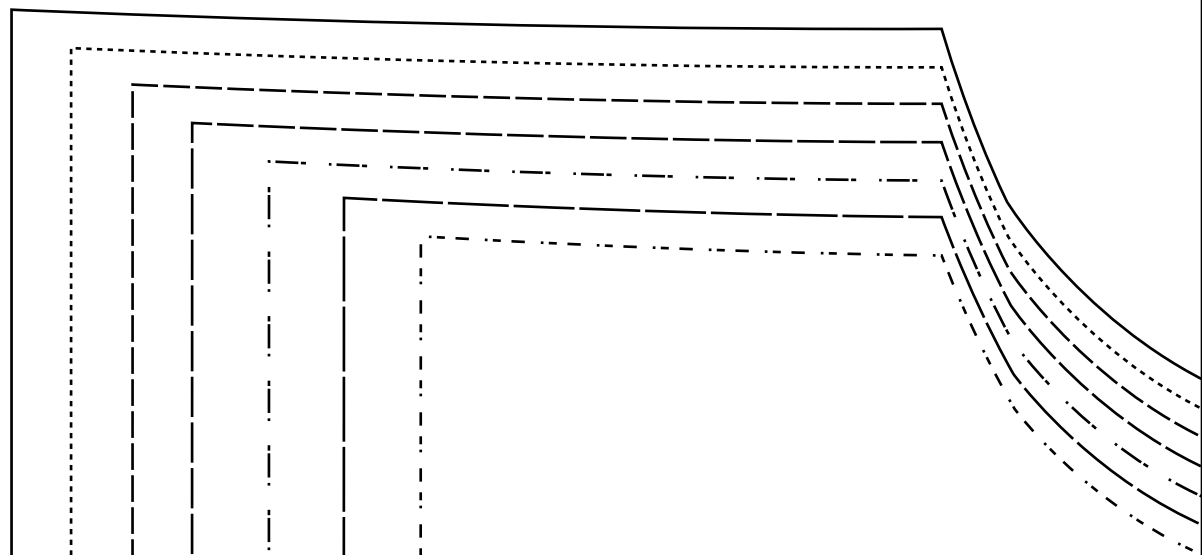
 /SEWINGANDFABRIC

 /BOBBINS_AND_BUTTONS

 /BOBBINSNBUTTONS

 /BOBBINSNBUTTONS1

WWW.BOBBINSNBUTTONS.CO.UK



OPY COVER

1

SEAM ALLOWANCE

A



1

TEST SQUARE

50MM X 50MM

Measure the edge of the square to check your printer is set up correctly.

NAPPY COVER

C

Gusset
Cut x 2

1.5CM SEAM ALL

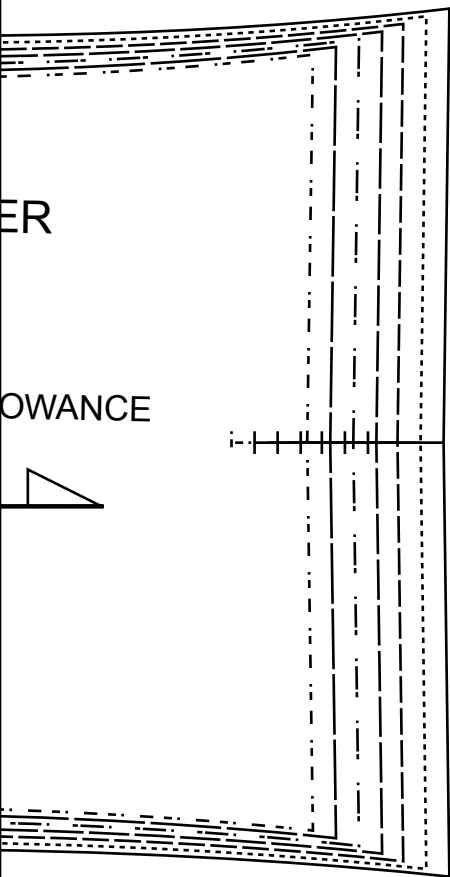


2

B

ER

OWANCE



2

C

NAPPI

Back

Cut x

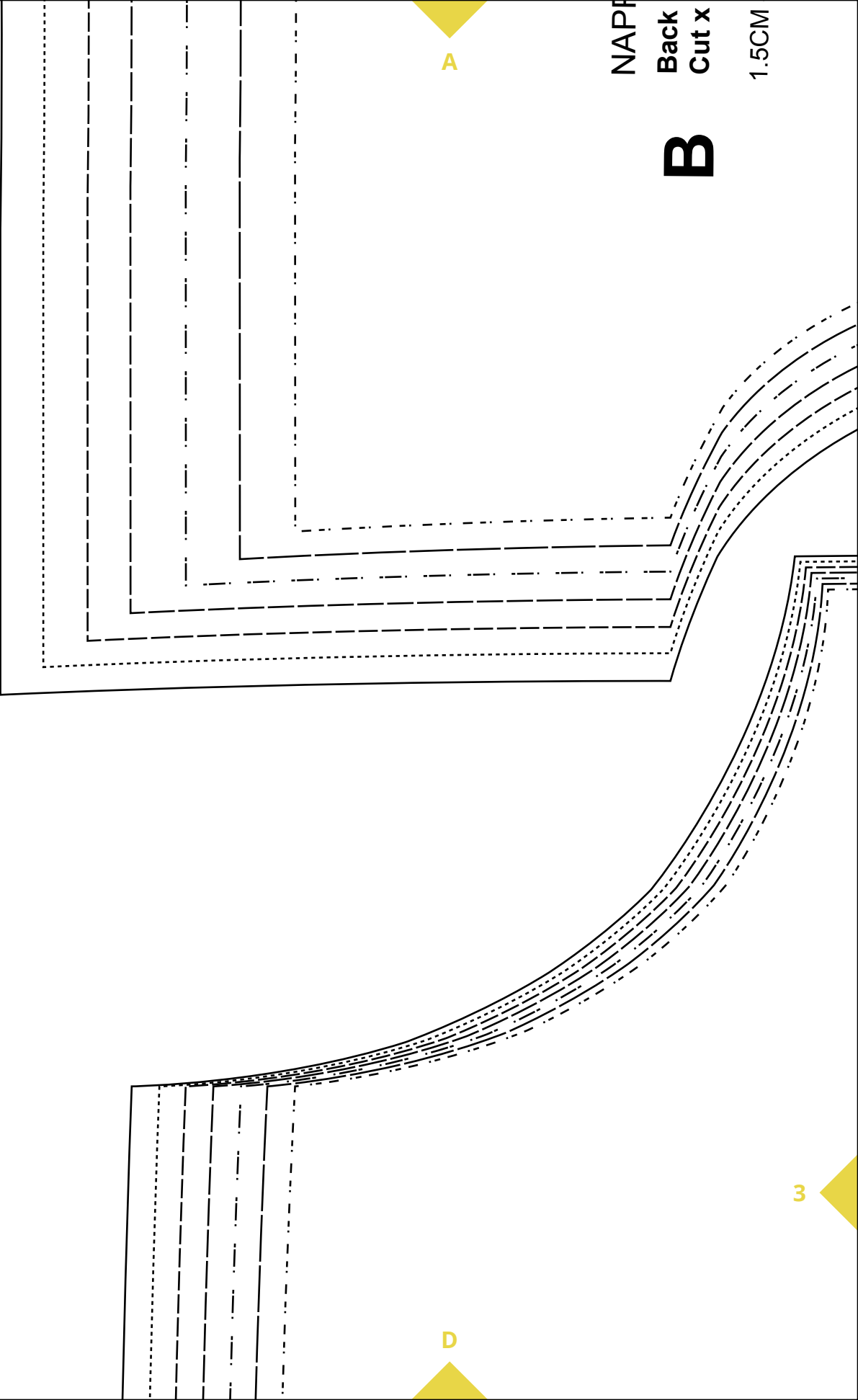
1.5CM

A

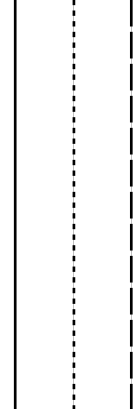
B

3

D



10111
2yr
3yr



A

NAPPY COVER

Front
Cut x 1

1.5CM SEAM ALLOWANCE



B

3

E

4

C

0-3m

3m

6m

12m

18m

4

F

D



E

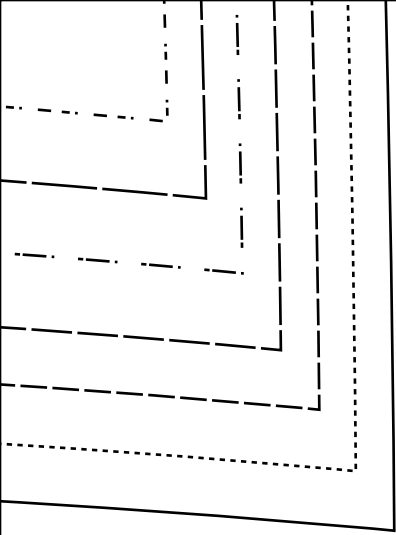


5



6

F



6